

# DURST

*Next  
Generation*

**HYDRAULIC  
PUMP  
DRIVES**

(Patent No. 7,152,711)



*Driven by DURST*

# HYDRAULIC PUMP DRIVES

**Advanced Modular Design** (Patented) – Bearings and gears self-contained within cast iron split housing

**Flexibility** – More gear ratios accommodate wider range of applications

**Interchangeable** – Terrell, Federal and all major brands

**Simplicity** – Fewer parts, common in all models

**Ball Bearings** – New large ball bearings make servicing and assembly much easier

**Improved Durability** – Wet spline design provides constant oil flow across splines

**Higher Rating** – Now up to 1025 HP (2,150 ft-lb)

**Easier Field Service** – New design allows complete serviceability without needing specialty tools

**Availability** – Faster delivery due to part commonality

**Quiet Gears** – AGMA Class 10, solid-on-shaft gears provide quiet operation and uniform alignment

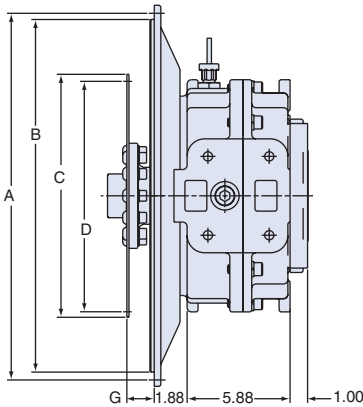
## Pump Drive Quick Selection Guide

MODEL	MAX. TORQUE (FT-LB)	INPUT STYLE†	FLYWHEEL HSG. SIZE	RATIO INC. OR DEC.	PUMP ADAPTERS	PUMP CENTER DISTANCE
<b>SINGLE PUMP DRIVE (DIRECT)</b>						
Zero Offset Direct Drive	1,250	P	2,3,4,5,6	N/A (direct)	A,B,C,D,E	N/A
1751D	1,250	P	1,2,3,4,5	N/A (direct)	A,B,C,D,E	N/A
<b>SINGLE PUMP DRIVE (GEARED)</b>						
1PD06	1,040	P,C,S	0,1,2,3,4	Up to 1.67	A,B,C,D,E,F	6.00
1PD09	1,710	P,C,S	0,1,2,3,4	Up to 2.00	A,B,C,D,E,F	9.00
<b>TWO PUMP DRIVE</b>						
2PD06	1,040	P,C,S	0,1,2,3,4	Up to 1.67	A,B,C,D,E,F	12.00
2PD08	1,525	P,C,S	0,1,2,3,4	Up to 1.53	A,B,C,D,E,F	16.00
2PD10	1,995	P,C,S	0,1,2,3,4	Up to 1.38	A,B,C,D,E,F	21.00
<b>THREE PUMP DRIVE</b>						
3PD06	1,040	P,C,S	0,1,2,3,4	Up to 1.52	A,B,C,D	8.49 x 12.38
3PD08	1,525	P,C,S	0,1,2,3,4	Up to 1.53	A,B,C,D,E,F	13.29 x 12.00
3PD10	1,995	P,C,S	0,1,2,3,4	Up to 1.38	A,B,C,D,E,F	15.91 x 18.00
<b>FOUR PUMP DRIVE</b>						
4PD08	1,525	P,C,S	0,1,2,3,4	Up to 1.53	A,B,C,D,E,F	11.08 x 11.54
4PD09	1,710	P,C,S	0,1,2,3,4	Up to 1.40	A,B,C,D,E,F	12.18 x 13.25
4PD11	2,150	P,C,S	0,1,2,3,4	Up to 1.39	A,B,C,D,E,F	16.05 x 16.00
<b>FIVE PUMP DRIVE</b>						
5PD08						
<b>AVAILABLE THIRD QUARTER 2010</b>						
<b>SIX PUMP DRIVE</b>						
806	1,260	P,C,S	1,2 or 3	Up to 1.66 (Dual)	A,B,C,D or E	8.00 to 18.75

† Input Style: P = Plate Driven C = Clutch Driven S = Shaft Driven

# INPUT ADAPTATIONS

## Drive Plate Options



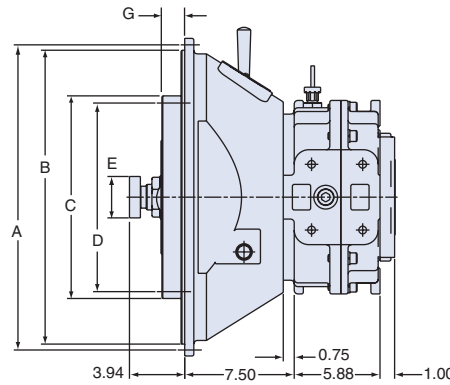
### Flywheel Housing Options

SAE NO.	A	B
0	26.750	25.500
1	20.875	20.125
2	18.375	17.625
3	16.875	16.125
4	15.000	14.250

### SAE Drive Plate Options

SAE NO.	C	D	G
8	10.375	9.625	2.438
10	12.375	11.625	2.125
11-1/2	13.875	13.125	1.562
14	18.375	17.250	1.000
18	22.500	21.375	0.625

## Clutch Options



### SAE Clutch Options

CLUTCH SIZE	TORQUE (FT LBS)	C	D	E	G
10"	328	12.375	11.625	2.834	2.125
11-1/2"	387	13.875	13.125	2.834	1.562
11-1/2" DP	910	13.875	13.125	2.834	1.562
14" DP	1620	18.375	17.250	3.149	1.000

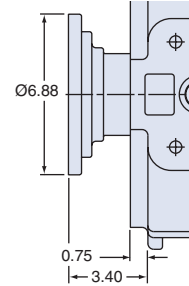
### SAE Clutch Housing Options

SAE SIZE	A	B
1	20.875	20.125
2	18.375	17.625
3	16.875	16.125

## Input Shaft/Flange Options

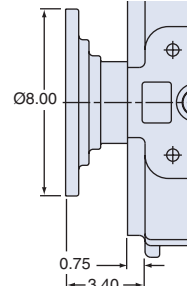
### Option #1

Companion Flange Spicer 1610 Series

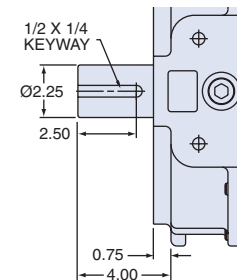


### Option #2

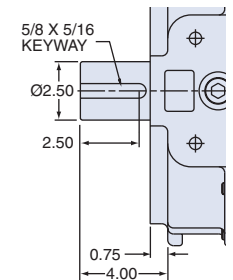
Companion Flange Spicer 1810 Series



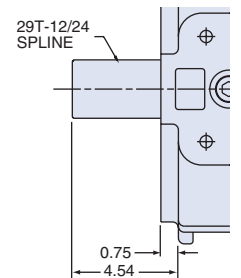
### Option #3



### Option #4



### Option #5



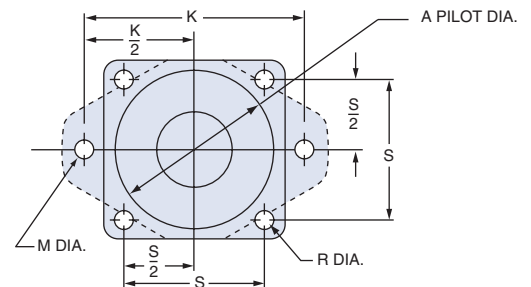
# PUMP ADAPTATIONS

## SAE Adapter Plates

MOUNTING FLANGE & SHAFT SIZE	Pump Adapter Plates				PILOT DIA. A
	2 BOLT TYPE		4 BOLT TYPE		
	K	M	S	R	
A	4.188	0.438	•	•	3.250
B	5.750	0.562	3.536	0.562	4.000
C	7.125	0.688	4.508	0.562	5.000
D	9.000	0.812	6.364	0.812	6.000
E	12.500	1.062	8.839	0.812	6.500
F	13.781	1.062	9.745	1.062	7.000

## SAE Shaft Adapters

SAE	SPLINED
	TEETH & PITCH
A	9T-16/32
B	13T-16/32
BB	15T-16/32
C	14T-12/24
CC	17T-12/24
D	13T-8/16
E	13T-8/16
F	15T-8/16
-	21T-16/32
-	23T-16/32
-	27T-16/32



**CAUTION** Always insure your powertrain is free of torsional vibrations. DURST is not responsible for damage or failure due to unaddressed torsional vibrations.

NOTE: Dimensions subject to change without notice.

# *Driven by DURST*

Since 1932 when Walter Durst converted his poultry farm into a small foundry and iron works, Durst has become a leader in the power transmission industry. In 1967, Durst was acquired by Regal Beloit Corporation (NYSE: RBC), a leading manufacturer of mechanical and electrical motion control and power generation products serving markets throughout the world.

In addition to direct drive and gear driven pump drives, Durst manufactures bevel, worm, irrigation and parallel shaft drives as well as shifting transmissions, transfer cases, opening gearing and turning gears for a multitude of applications. As a division of Regal Beloit, Durst is a company that truly provides products "at the heart of what drives your world."



## **DURST**

1-800-356-0775 • 608-365-2563 • Fax: 608-365-6812 • [durstinfo@regalbeloit.com](mailto:durstinfo@regalbeloit.com) • [www.durstdrives.com](http://www.durstdrives.com)